

Recombinant human IgG protein (His tag)

Description

Product name	Recombinant human IgG protein (His tag)
Catalog#	ABT-9112
Known as	Immunoglobulin heavy constant gamma 1; Ig gamma-1 chain C region; Ig gamma-1 chain C region EU; Ig gamma-1 chain C region KOL
Expression system	HEK 293 cells
Tags	His tag C-terminus

Specifications

SDS-PAGE	37.9 kDa, reducing conditions
Purity	>95% SDS-PAGE
Form	Lyophilized powder

Stability and Storage

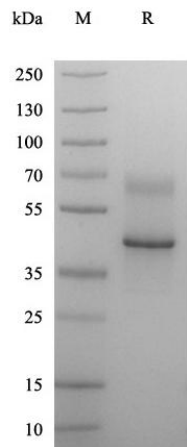
Storage	Store at -20 ~ -80°C, avoid repeated freeze/ thaw cycle
Stability	Store at -20°C for 12 months, or reconstitute for 3 months.
Constituents	Lyophilized from 0.22 µm filtered solution in PBS, Ph7.4.

General information

Function	Constant region of immunoglobulin heavy chains. Immunoglobulins, also known as antibodies, are membrane-bound or secreted glycoproteins produced by B lymphocytes. In the recognition phase of humoral immunity, serve as receptors which, upon binding of a specific antigen, trigger the clonal expansion and differentiation of B lymphocytes.
-----------------	---

Images

For research use only.



Human IgG (His Tag) on SDS-PAGE under reducing condition(R). The gel was visualized by Coomassie® Blue Staining. The purity of the protein is greater than 95%.

For research use only.