

Recombinant *Canis lupus familiaris* CPV-VP2 protein (His tag)

Description

Product name	Recombinant <i>Canis lupus familiaris</i> CPV-VP2 protein (His tag)
Catalog#	ABT-9081
Known as	Capsid protein; Capsid protein VP2; Structural protein 2
Expression system	E.coli
Tags	His tag C-terminus

Specifications

SDS-PAGE	66 kDa, reducing conditions
Purity	>85% SDS-PAGE
Form	Lyophilized powder

Stability and Storage

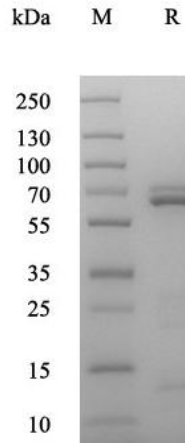
Storage	Store at -20 ~ -80°C, avoid repeated freeze/ thaw cycle
Stability	Store at -20°C for 12 months, or reconstitute for 3 months.
Constituents	Lyophilized from 0.22 µm filtered solution in PBS, pH7.4.

General information

Function	<p>Canine parvovirus disease (Canine parvovirus disease) is an acute infectious disease caused by canine parvovirus (Canine parvovirus, CPV), which can be infected by dogs of all ages. The virion contains three proteins-VP1 (82.3kD), VP2 (67.3kD) and VP3 (63.5kD). VP2 constitutes the main component of the capsid protein. There are only two proteins-VP1 and VP2 in the empty capsid of the virus, while VP3 is the lysate of VP2. It only appears after the assembly of the capsid and the packaging of the virus genome, and its relative amount increases with the process and development of infection. The surface of CPV particles is assembled by 60 structural subunits, of which VP2 accounts for 54 to 55, while VP1 accounts for only 5 to 6.</p>
-----------------	--

Images

For research use only.



Canis lupus familiaris CPV-VP2 protein (His Tag) on SDS-PAGE under reducing condition(R). The gel was visualized by Coomassie® Blue Staining. The purity of the protein is greater than 85%.

For research use only.