

Recombinant *Canis lupus familiaris* CRP protein (His tag)

Description

Product name	Recombinant <i>Canis lupus familiaris</i> CRP protein (His tag)
Catalog#	ABT-9010
Known as	Pentaxin
Expression system	HEK 293 cells
Tags	His tag C-terminus

Specifications

SDS-PAGE	25, 30 kDa, reducing conditions
Purity	>95% SDS-PAGE
Form	Lyophilized powder

Stability and Storage

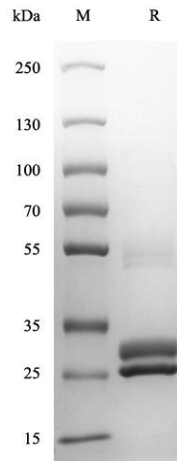
Storage	Store at -20 ~ -80°C, avoid repeated freeze/ thaw cycle
Stability	Aliquot and store at -20°C for 12 months.
Constituents	Lyophilized from 0.22 µm filtered solution in PBS, pH7.4 and 5% trehalose.

General information

Function	C-reactive protein (CRP) is a rapidly rising protein in plasma when the body is infected or damaged. It plays a conditioning role by activating complement and strengthening phagocytosis of phagocytes, and eliminates pathogenic microorganisms invading the body and damaged, necrotic and apoptotic tissue cells.
-----------------	---

Images

For research use only.



Canis lupus familiaris CRP (His Tag) on SDS-PAGE under reducing condition(R). The gel was visualized by Coomassie® Blue Staining. The purity of the protein is greater than 95%.

For research use only.