

## Recombinant human IGF-1 with a fusion protein

### Description

<b>Product name</b>	Recombinant human IGF-1 with a fusion protein
<b>Catalog#</b>	ABT-9088
<b>Known as</b>	Insulin-like growth factor I; Mechano growth factor; Somatomedin-C
<b>Expression system</b>	E.coli
<b>Tags</b>	His tag C-terminus

### Specifications

<b>SDS-PAGE</b>	30 kDa, reducing conditions
<b>Purity</b>	>90% SDS-PAGE
<b>Form</b>	Lyophilized powder

### Stability and Storage

<b>Storage</b>	Store at -20 ~ -80°C, avoid repeated freeze/ thaw cycle
<b>Stability</b>	Aliquot and store at -20°C for 12 months.
<b>Constituents</b>	Lyophilized from 0.22 µm filtered solution in Tris-HCl with 0.2M NaCl, pH8.

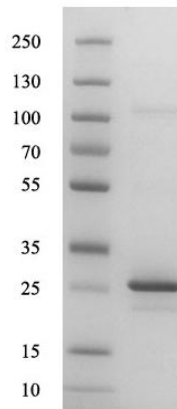
### General information

<b>Function</b>	<p>The insulin-like growth factors, isolated from plasma, are structurally and functionally related to insulin but have a much higher growth-promoting activity. May be a physiological regulator of [1-14C]-2-deoxy-D-glucose (2DG) transport and glycogen synthesis in osteoblasts. Ca<sup>2+</sup>-dependent exocytosis of IGF1 is required for sensory perception of smell in the olfactory bulb.</p>
-----------------	---

### Images

**For research use only.**

kDa M R



Human IGF-1 with a fusion protein on SDS-PAGE under reducing condition(R). The gel was visualized by Coomassie® Blue Staining. The purity of the protein is greater than 90%.

**For research use only.**